



FOUNDRY MACHINERY



专业智造50年

PROFESSIONAL
MANUFACTURING
FOR

50

YEARS





CUSTOMER

• 客户

WEICHAI
潍柴

GEMCO[®]
CAST METAL TECHNOLOGY

KÜNKELWAGNER[®]
WEITER DENKEN

Mahindra
RACING

+GF+

AIA
AIA Engineering Ltd.

BMD
Foundry Technology

CONMET[®]

DISA
A Norican Technology

FMF
SINOMACH
国机铸锻

Gautam
Gautam Group

ej

sinto

TATA

M
WANE

BYD
比亚迪

一汽

东风商用车
DONGFENG TRUCKS

Volkswagen

长城汽车

MACHING EQUIPMENT

加工设备

Processing capacity

- With a maximum processing range of 12000mm x 3400mm x 1500mm (with angle head). There are 7 gantry machining centers of different specifications, which have the processing capacity of "pentahedron".
- Reduce the cumulative error of repeated clamping and improve the accuracy.
- 5 CNC horizontal machining centers such as 3000mm x 1500mm x 1250mm.
- 2000mm x 12500mm x 1250mm double position CNC Horizontal Machining Center 1 set. More than 30 small-scale CNC machining equipment.



加工能力

- ◎ 具有最大加工范围 12000mm X 3400mm X 1500mm (带角度头)等不同规格的龙门加工中心7台, 拥有“五面体”加工能力。
- ◎ 减少重复夹装的累计误差, 提升精度。
- ◎ 3000mm X 1500mm X 1250mm 等数控卧式加工中心5台。
- ◎ 2000mm X 1250mm X 1250mm 双工位数控卧式加工中心1台、小型数控加工设备30余台。

INSPECTION PROCESS

检验过程

严格的质量控制为客户提供满意的产品

Strict quality control guarantees customers satisfactory products.

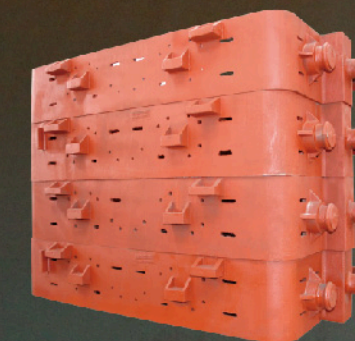


ROUGH CASTINGS

铸件

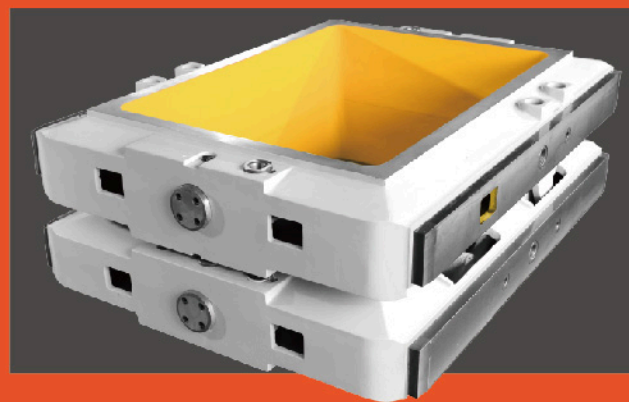
优质的砂箱、台车、型板框以优质的铸件为基础。

Good products are based on high quality castings.



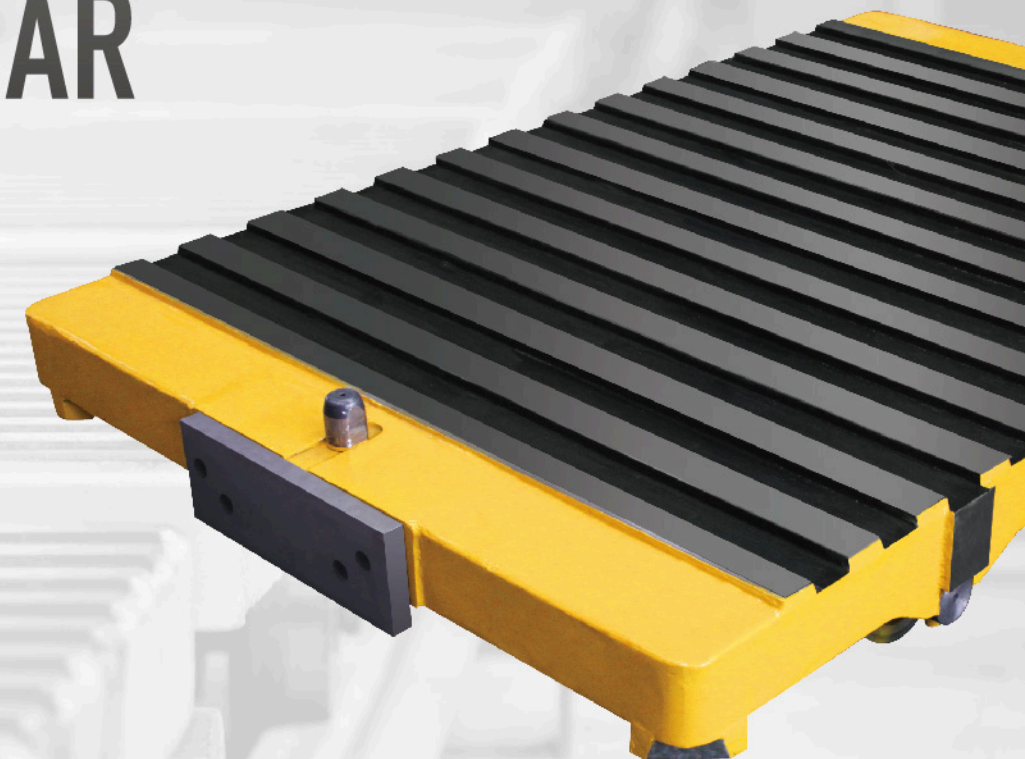


FLASK 砂箱



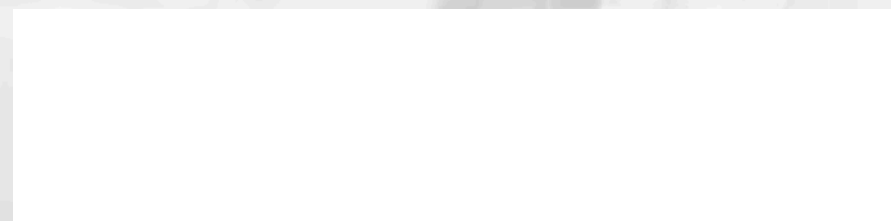
PALLET CAR

台车

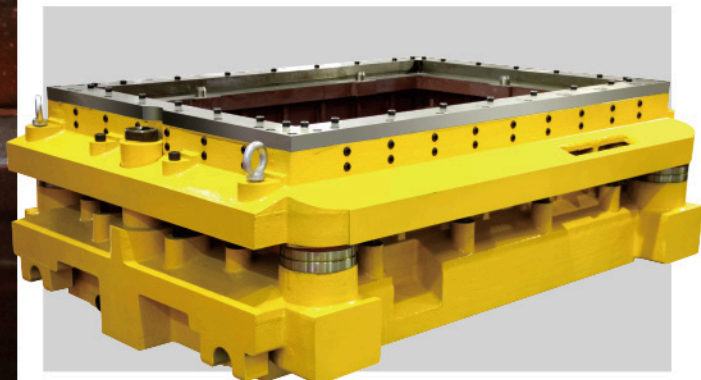


ISO9001

International Quality
System Certification



型板框
PATTERN
BOLSTER



输送机
CONVEYOR

Apron conveyors of model BLT and JYB are kind of common fixed mechanized transport equipment. They are used in transportation of massive scattered materials or single piece weight especially adaptable to materials with large volume, heavy-weight, high temperature and corrosion. In the same time, processes such as removing gating-and-risering, cooling, drying, and classifying can be done during the transportation. Apron conveyors are widely used in foundry, machinery, metallurgy, chemistry, materials, power, mining, and other industry sections.

In comparison with model BLT, model JYB has the advantages of high traction, good rigidity and impact resistance, and is more suitable for transferring hot and heavy castings. The Graphite lubrication system can guarantee 10 years maintenance free.

BLT、JYB型鳞板输送机是一种通用型固定式机械化输送设备，它用钢板做运载槽体可用于大量散状物料及单件重物的输送。尤其适用于大块的、沉重的、灼热的以及腐蚀性的物料，并能在输送过程中同时完成清除浇冒口，冷却、干燥及分类等工艺工程。广泛应用于机械、铸造、冶金、化工、建材、动力、矿山等工业部门。

与BLT型鳞板输送机比较，JYB型鳞板输送机牵引力大，槽板刚性好，耐冲击，更适宜输送灼热的，较重的铸锻件。采用石墨润滑系统，可做到十年免维护。

型号 Model	鳞板宽度 Width of Apron mm	槽体高度 Height of Trough mm	允许装载量 Allowable Load of Traction mm	爬升角度 Max.inclination Allowance	运行速度V Motion Speed m/min	牵引链节距P Pitch of Chain mm
BLT80	800	160	120	<25°	0.8-6 或无极调速	320
BLT100	1000	160	200			320
BLT120	1200	200	250			320
JYB80	800	135	400			320
JYB100	1000	135	500			320
JYB120	1200	135	500			320
JYB140	1400	135	500			320

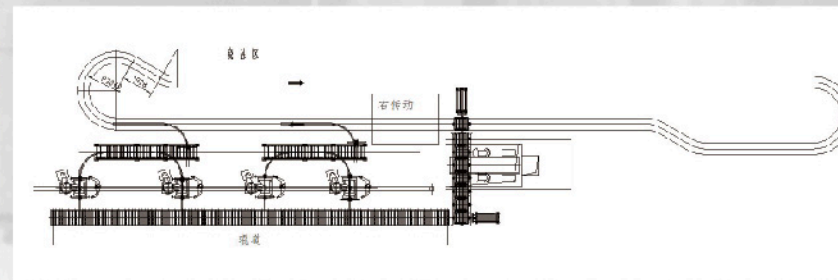
- 
- 7 VARIETY OF AFTER SERVICES
 - 16 INSPECTION PROCESS WHILE THE PRODUCING
 - 40 THE COUNTRIES AND AREA WERE EXPORT TO
 - 50 ADVANCED SERIES OF EQUIPMENT FOR THE MACHINING
 - 600 THE QUANTITIES OF THE FOUNDRIES WE OFFER THE SERVICES
 - 8,000 THE ANNUAL FLASK MANUFACTURING
 - 43,800 FLASK WORKING HOURS WITHOUT MAINTENANCE

AUTOMATION REPLACES HUMAN WORKERS

用自动化代替人工

MECHANIZED MOLDING LINE

机械化造型线



Mechanized molding line is the foundry company ideal equipment for batch production for the mechanization reformation.

Transfer car complete casting mould transportation through series processes such as molding, core setting, flask closure, pouring, shaking out.

This kind of molding line can realize pattern draft on roller path and connects roller paths and various auxiliary devices (flask pushing device, punch-out device, flask separating device, flask steering device, turnover device, etc.). The operation is convenient and layout is flexible. It has the advantages of less investment, quick effect, and good maintenance management.

机械化造型线是批量生产铸造企业进行机械化改造较理想的设备。铸型转运车将造型、下芯、合箱、浇注及落砂等工序连接，完成铸型输送。造型线可实现滚道起模，通过滚道和各种辅机（推箱机，捅箱机，分箱机，砂箱转向机，翻箱机等）联接。操作方便快捷，布置灵活规范，具有投资少，见效快，便于维护管理等特点。

